

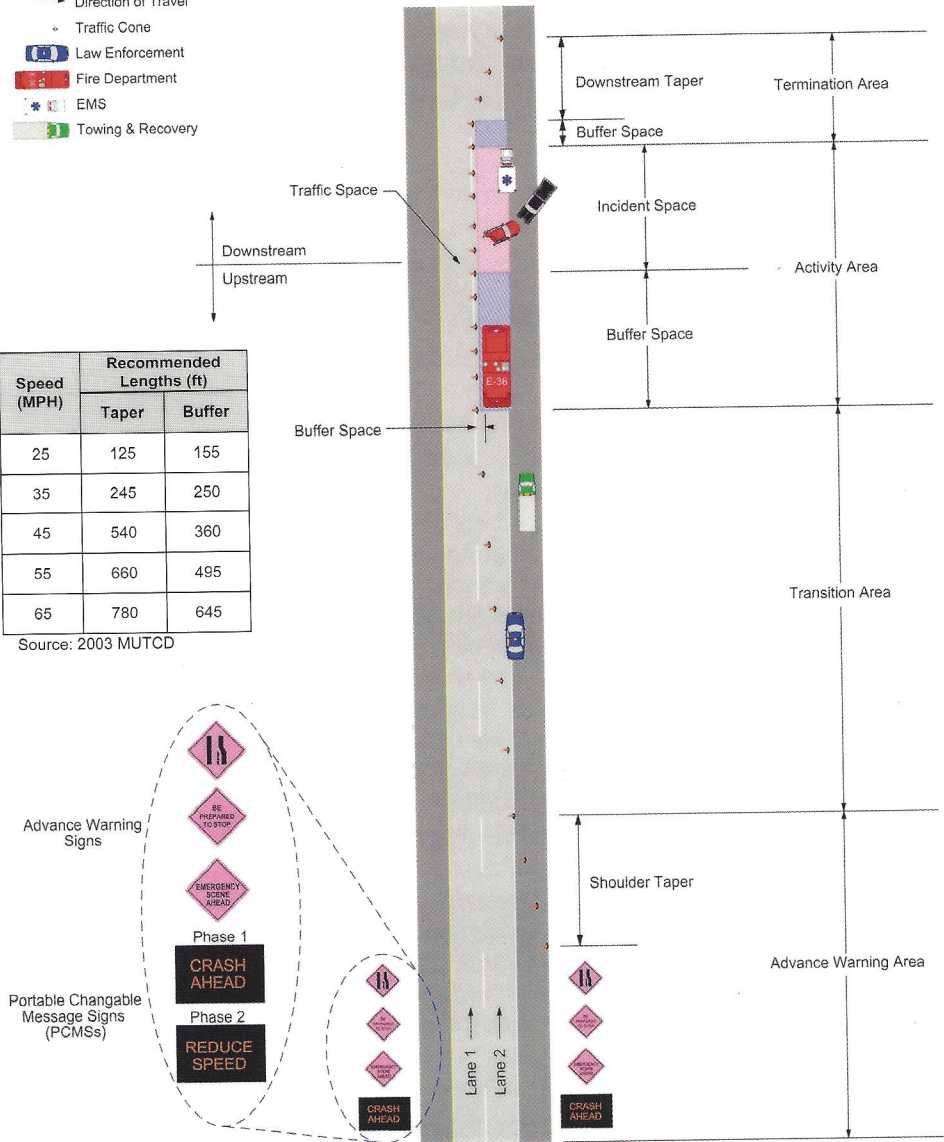
# Traffic Incident Management Area (TIMA)

## Legend

- Direction of Travel
- Traffic Cone
- 👮 Law Enforcement
- 🚒 Fire Department
- 🚑 EMS
- 🚚 Towing & Recovery

Speed (MPH)	Recommended Lengths (ft)	
	Taper	Buffer
25	125	155
35	245	250
45	540	360
55	660	495
65	780	645

Source: 2003 MUTCD



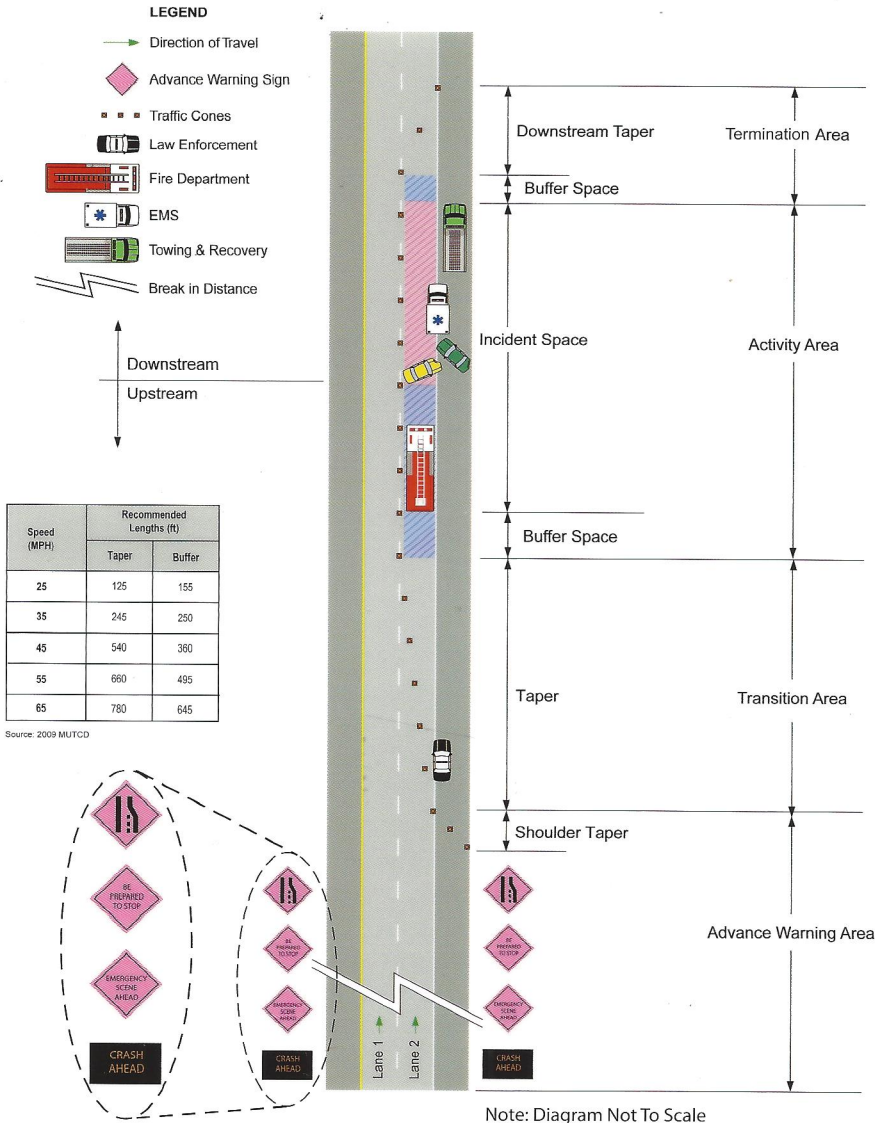
**Put on high-visibility safety apparel as soon as possible**

1. Park vehicle in a block position
2. Stabilize scene

3. Conduct initial scene size-up
4. Initiate ICS / Unified Command
5. Establish a TIMA
6. Conduct secondary scene size-up



## Traffic Incident Management Area (TIMA)



### Put on high-visibility safety apparel as soon as possible

1. Park vehicle in a block position
2. Stabilize scene

3. Conduct initial scene size-up
4. Initiate ICS/Unified Command
5. Establish a TIMA
6. Conduct secondary scene size-up

## Emergency Traffic Control & Scene Management - Quick Reference

### Incident Response Priorities

1. Life Safety
2. Incident Stabilization - prevention of secondary crashes; protection of evidence; safe, quick clearance
3. Protection of Property and the Environment

### Incident Classification

- **Major** - expected duration of more than 2 hours
- **Intermediate** - expected duration between 30 minutes and 2 hours
- **Minor** - expected duration of less than 30 minutes

### Initial Scene Response Objectives

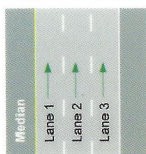
***It is imperative that high-visibility safety apparel (i.e. safety vests) be put on and worn for the duration of an incident***

1. Position your vehicle to establish initial block
2. Stabilize scene and provide medical attention to injured persons
3. Conduct initial scene size-up
  - *Location* - exact incident location
  - *Vehicles* - number and type of vehicles involved
  - *Injured Persons* - number of people injured and extent of injuries
  - *Incident Classification* - Major, Intermediate, or Minor
  - *Request for Public Works and/or Highway Dept Support* - for major and intermediate incidents the public works and/or highway dept should be notified to assist with traffic control
  - *Other Conditions* - any other conditions present at the scene that may affect the safety of responders
4. Initiate Incident Command System (ICS) and/or Unified Command
5. Establish a Traffic Incident Management Area (TIMA)
6. Conduct secondary scene size-up - request additional resources
  - *Hazardous Materials* - response and clean up
  - *Towing and Recovery* - provide accurate, detailed vehicle info
  - *Traffic Conditions* - report traffic conditions, as well as alternate response routes and/or emergency alternate routes being used
  - *Additional Resources* - medical helicopter services, crash investigation/reconstruction, medical examiner/coroner, DNR, etc.

---

Contact the Wisconsin Dept of Transportation's **Statewide Traffic Operations Center (STOC)** at **1-800-375-7302** for any incident that is anticipated to have at least one state highway lane/ramp blocked for more than 30 minutes. Please note that this number is **NOT** to be distributed to the general public.

---



### Lane Naming Convention

Lanes are numbered starting with the left-most lane as seen from the motorist's direction of travel being Lane 1. (Lane 1 is nearest to the center line/median.)