

CHIPPEWA FIRE DISTRICT ORGANIZATIONAL STRUCTURE

Command Staff

Fire Chief Scott Bernette (EMT-B)

Assistant Chief Dan Dienger

Assistant Chief Mark Roshell (CC/EMT-P)

Deputy Chief of Fire Investigator/Inspector John Andersen (EMT-B)

Station 1

Chief 1 Chuck Smith

D-11 Mike Nowak (EMT-A)

D-12 Kevin Nyseth (EMT-P)

D-13 Jim Campbell (MFR)

D-14 Mitch Bias (EMT-B)

D-15 Ron Wolf (CC/EMT-P)

Total Station Members = 50

Station 2

Chief 2 Adam Blaskowski (EMT-B)

D-21 Andrew Wood (MFR)

D-22 Mark Blaskowski

D-23 Bob Hayden

D-24 Brian Gerrits (MFR)

Total Station Members = 14

Station 3

Chief 3 Cory Jeffers (EMT-A)

D-31 Josh Rihn

D-32 Bob Bauer (EMT-B)

D-33 Jeff Frederick (EMT-B)

D-34 Dan Enestvedt (EMT-B)

Total Station Members = 42

Station 6

Chief 6 Duane Wallsch

D-61 Lloyd Bowe

D-62 Joe Schindler

D-63 Ron Dreger

D-64 (open)

Total Station Members = 16

On Duty Crews

A-Shift

Nick Sprague (FF & CC/EMT-P) *

Josh Bodette (FF & CC/EMT-P)

B-Shift

Jacob Grotthus (FF & CC/EMT-P) *

Shaylee Miracle (FF & CC/EMT-P)

C-Shift

Ron Wolf (FF & CC/EMT-P) *

Aaron Kirley (FF & CC/EMT-P)

Part-Time

Dan Brzeskiewicz (FF & CC/EMT-P)

Jenn Struensee (FF & EMT-P)

Inspection Division

Lead Tank Inspector

Rebecca Shervey (FF/EMT-B)

Lead Fire Investigator

Doug Mathewes (FF/ EMT-B)

Lead Fire Investigator

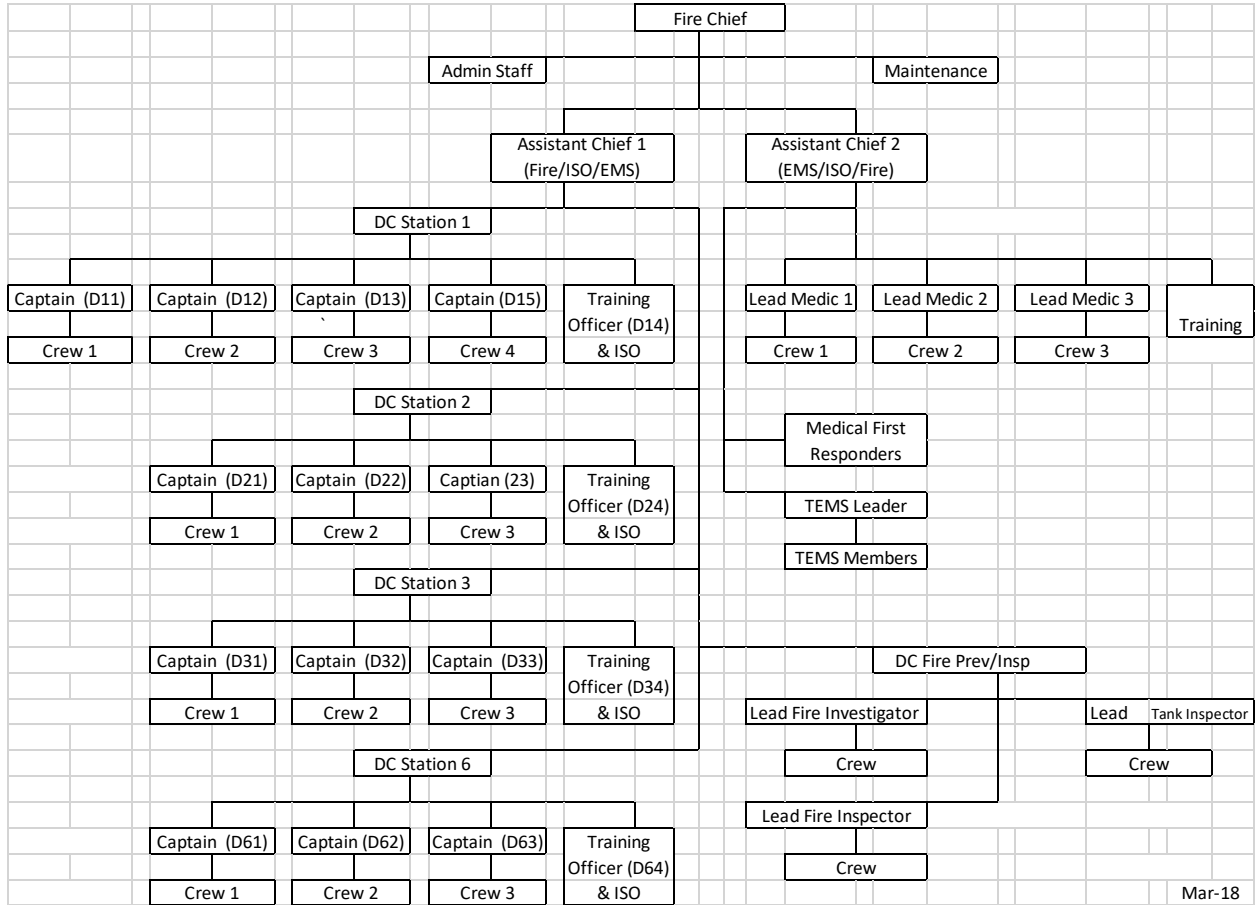
DC John Andersen (EMT-B)

Administrative Staff

Rita Erickson

* = Lead Medic

CHIPPEWA FIRE DISTRICT ORGANIZATIONAL CHART



Mar-18